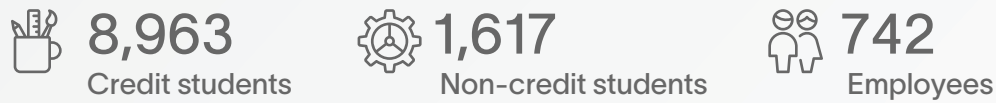


# The Economic Value of Coastal Alabama Community College

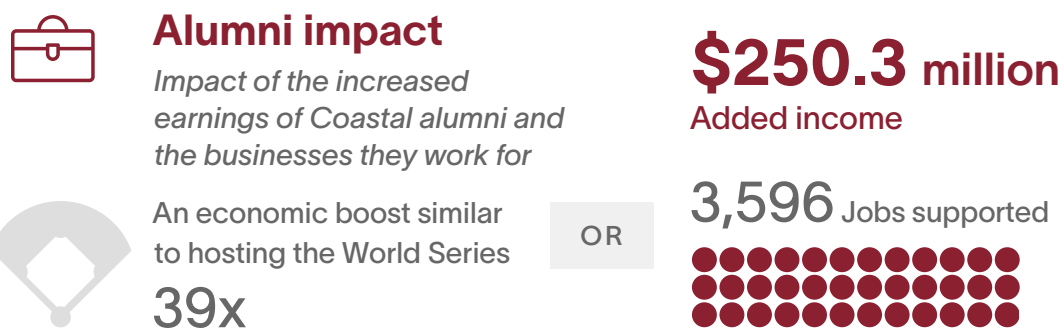
## About Coastal



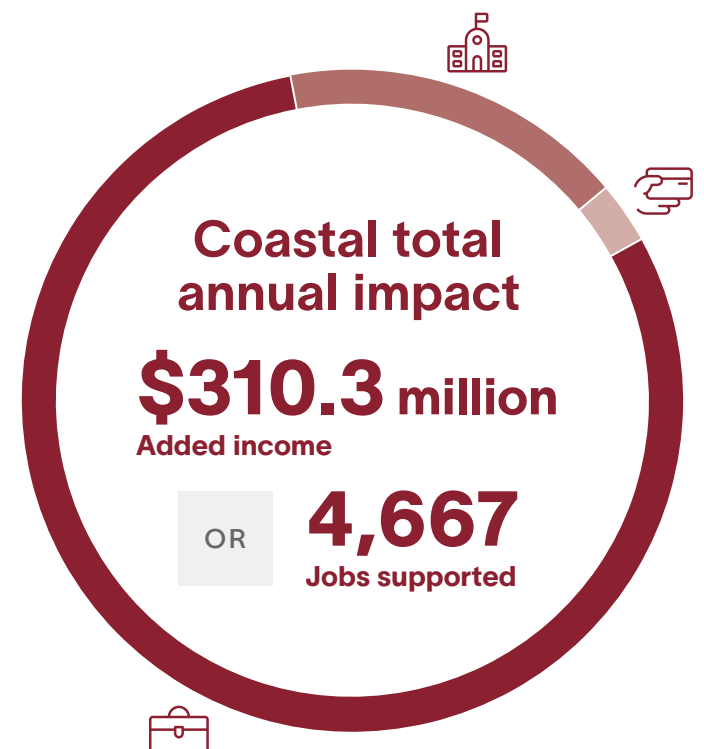
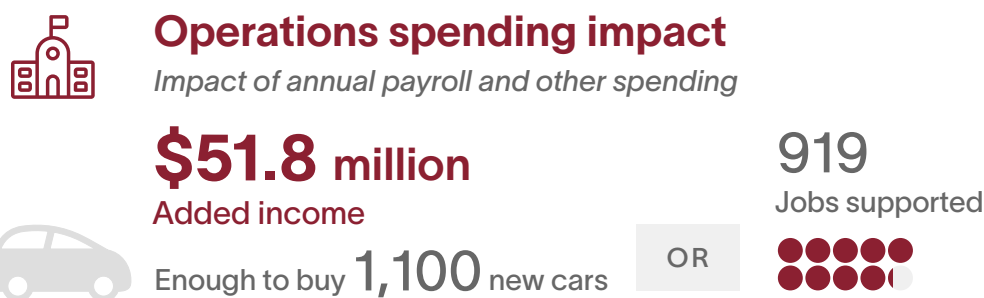
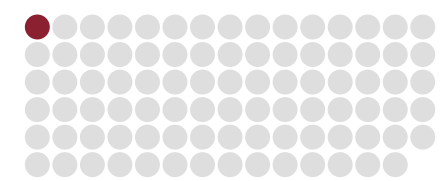
The Coastal Service Area  
Alabama



## Economic impact analysis

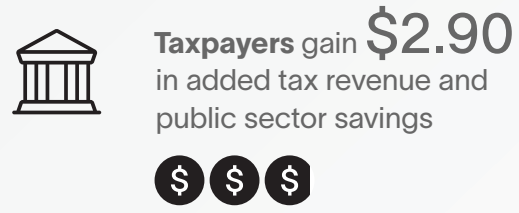
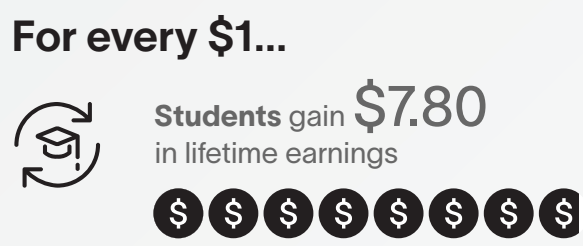


**1** out of every **89** jobs in the Coastal Service Area is supported by the activities of Coastal and its students.



● = 100 jobs    \* = family of four

## Investment analysis



The average associate degree graduate from Coastal will see an increase in earnings of **\$8,900** each year compared to someone with a high school diploma working in Alabama.

